

4

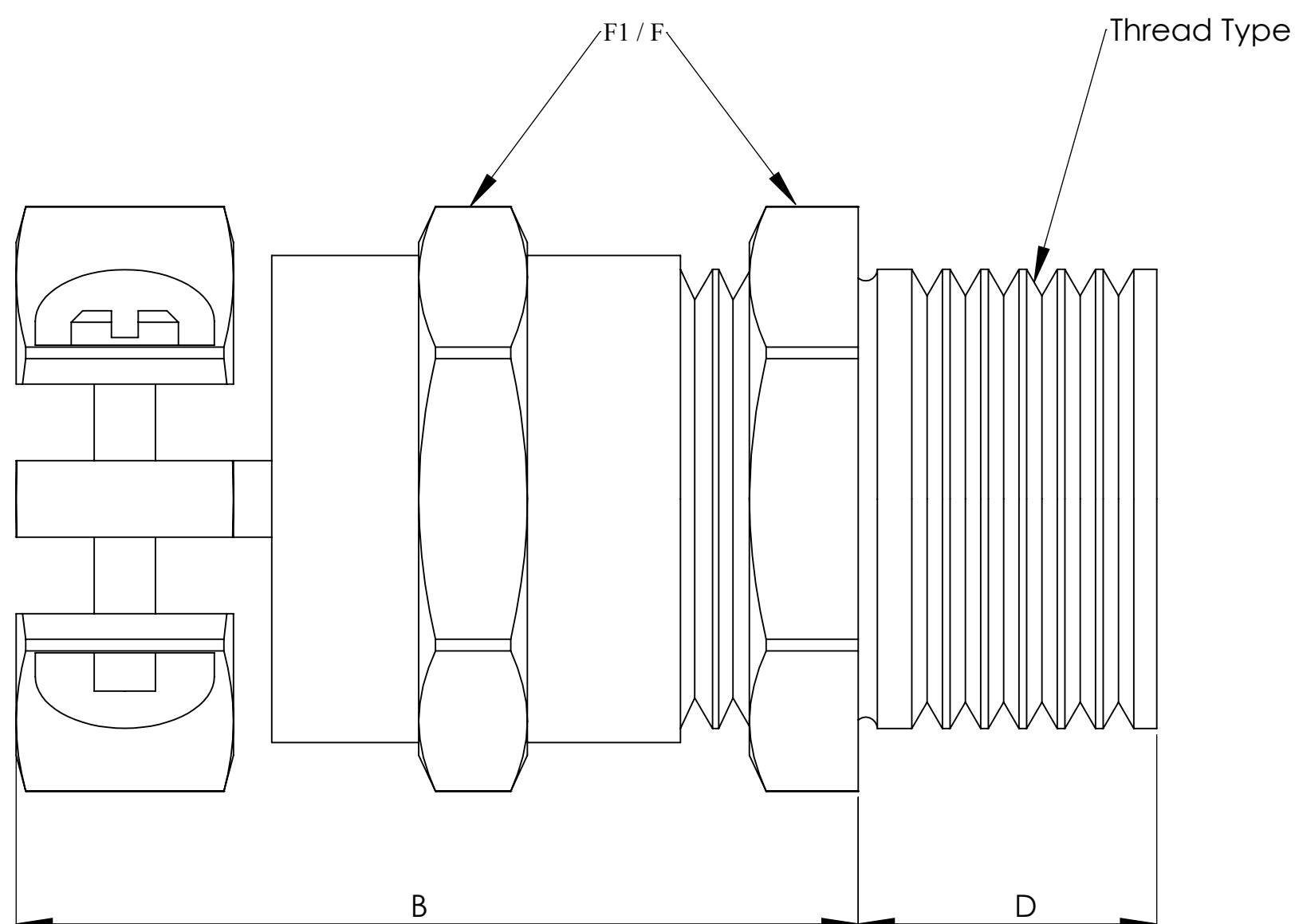
3

2

1

HIGH PERFORMANCE - ELONGATED THREADS-NICKEL PLATED BRASS

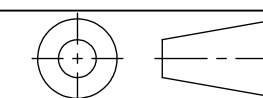
PART NUMBERS	CABLE RANGE	THREAD TYPE	BODY HEIGHT (B)	THREAD LENGTH (D)	WRENCH FLAT (F1 / F)
Strain Relief w/ Clamp	Inches (mm)		Inches (mm)	Inches (mm)	Inches (mm)
PG THREADS					
CD07CA-MZ	.11 - .26 (3-6.5)	PG 7	1.02 (26)	.39 (10)	.55(14)
CD09CA-MZ	.16 - .31 (4-8)	PG 9	1.10(28)	.39 (10)	.67(17)
CD11CA-MZ	.24 - .39 (6-10)	PG 11	1.18(30)	.39 (10)	.79(20)
CD13CA-MZ	.24 - .47 (6-12)	PG 13	1.30(33)	.39 (10)	.87(22)
CD16CA-MZ	.39 - .55 (10-14)	PG 16	1.30(33)	.39 (10)	.94(24)
CD21CA-MZ	.51 - .71 (13-18)	PG 21	1.30(33)	.47(12)	.94(24)
CD29CA-MZ	.79 - .98 (20 - 25)	PG 29	1.69(43)	.47(12)	1.57(40)
CD36CA-MZ	.94 - 1.26 (24 - 32)	PG 36	1.97(50)	.59(15)	1.97(50)
CD42CA-MZ	1.26 - 1.50 (32-38)	PG 42	2.01(51)	.59(15)	2.24(57)
CD48CA-MZ	1.46 - 1.73 (37-44)	PG 48	2.05(52)	.59(15)	2.52(64)
METRIC THREADS					
CD12DA-MZ	.11 - .26 (3-6.5)	M12 x 1.5	1.02(26)	.39(10)	.55(14)
CD16DA-MZ	.16 - .31 (4-8)	M16 x 1.5	1.10(28)	.39(10)	.75(19)
CD17DA-MZ	.24 - .39 (6-10)	M16 x 1.5	1.18(30)	.39(10)	.79(20)
CD20DA-MZ	.24 - .47 (6-12)	M20 x 1.5	1.30(33)	.39(10)	.87(22)
CD22DA-MZ	.39 - .55 (10-14)	M20 x 1.5	1.30(33)	.24(6)	.94(24)
CD25DA-MZ	.51 - .71 (13-18)	M25 x 1.5	1.46(37)	.47(12)	1.18(30)
CD32DA-MZ	.71 - .98 (18-25)	M32 x 1.5	1.69(43)	.47(12)	1.57(40)
CD40DA-MZ	.86 - 1.26 (22-32)	M40 x 1.5	1.97(50)	.59(15)	1.97(50)
CD50DA-MZ	1.26 - 1.50 (32-38)	M50 x 1.5	2.01(51)	.59(15)	2.24(57)
CD50DR-MZ	.98 - 1.22 (25-31)				
CD63DA-MZ	1.46 - 1.73 (37-44)	M63 x 1.5	2.05(52)	.59(15)	2.52(64) / 2.68(68)
CD63DR-MZ	1.14 - 1.38 (29-35)				



NOTES:

- 1) GENERAL DIMENSIONS DRAWINGS.
- 2) DIMENSIONS [] ARE IN MILLIMETER.
- 3) DIMENSIONS NOTED ARE FOR REFERENCE ONLY.

Third angle projection



7374 S. EAGLE STREET
 CENTENNIAL, CO 80112-4221 USA
 TEL: +1-303-699-1135
 TOLL FREE: +1-800-456-9012
 E MAIL: info@sealconusa.com,
 WEBSITE: www.sealconusa.com

4

3

2