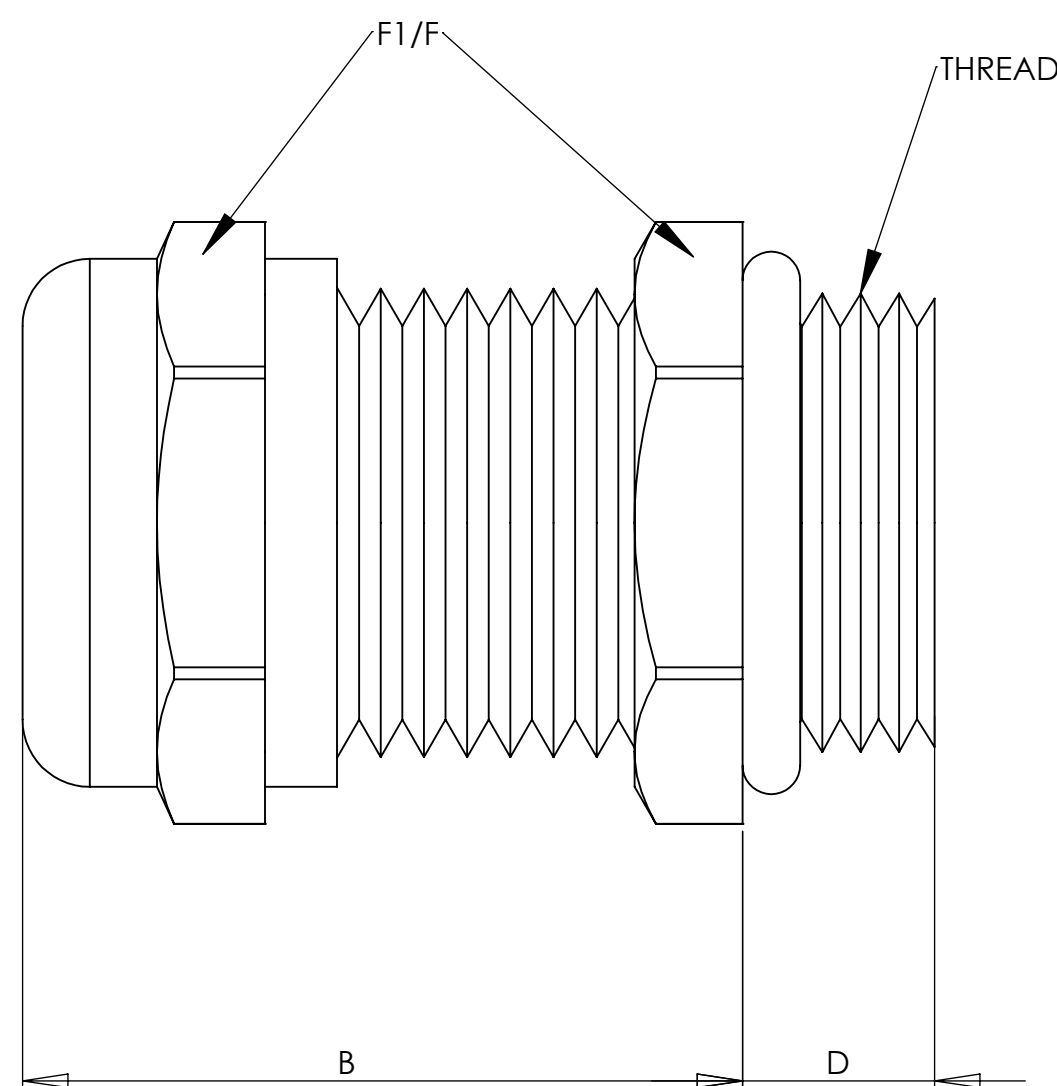


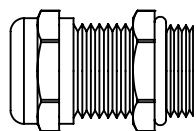
**SPECIFICATIONS:**

**Pressure rating:**  
150 PSIG (10 BAR) NEMA 4x and 6  
(Submersible) IP 68

**Materials:**  
Body & Dome Nut: Nickel Plated Brass  
Spline Bushing: PVDF  
Form Seal, Insert &  
O-Ring: Viton®

**Operating Temperature:**  
-31°F to 302°F (-35°C to 150°C)  
Short term 356°F (180°C)

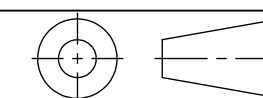


PART NUMBERS 	CABLE RANGE inches (mm)	THREAD TYPE AND SIZE For threads specs see page 29	DIMENSIONS INCHES (MM)			
			A Clearance Hole $+0.010^{+0.25mm}$ 0	B Body Length	D Thread Length	F <sub>1</sub> /F Wrenching Flats
CD12MA-RV CD12MR-RV	.11 - .26 (3 - 6.5) .08 - .20 (2 - 5)	M12 x 1.5	.47 (12)	.75 (19)	.20 (5)	.55 (14)
CD16MA-RV CD16MR-RV	.20 - .39 (5 - 10) .11 - .27 (3 - 7)	M16 x 1.5	.63 (16)	.87 (22)	.24 (6)	.79 (20)
CD20MA-RV CD20MR-RV	.39 - .55 (10 - 14) .27 - .47 (7 - 12)	M20 x 1.5	.79 (20)	.94 (24)	.24 (6)	.94 (24)
CD25MA-RV CD25MR-RV	.51 - .71 (13 - 18) .35 - .63 (9 - 16)	M25 x 1.5	.98 (25)	1.02 (26)	.27 (7)	1.18 (30)
CD32MA-RV CD32MR-RV	.71 - .98 (18 - 25) .51 - .79 (13 - 20)	M32 x 1.5	1.26 (32)	1.22 (31)	.31 (8)	1.57 (40)
CD40MA-RV CD40MR-RV	.87 - 1.26 (22 - 32) .79 - 1.02 (20 - 26)	M40 x 1.5	1.58 (40)	1.46 (37)	.31 (8)	1.97 (50)

**NOTES:**

- 1) GENERAL DIMENSIONS DRAWINGS.
- 2) DIMENSIONS [ ] ARE IN INCHES.
- 3) DIMENSIONS NOTED ARE FOR REFERENCE ONLY.

Third angle projection



7374 S. EAGLE STREET  
CENTENNIAL, CO 80112-4221 USA  
TEL: +1-303-699-1135  
TOLL FREE: +1-800-456-9012  
E MAIL: [info@sealconusa.com](mailto:info@sealconusa.com),  
WEBSITE: [www.sealconusa.com](http://www.sealconusa.com)

