

**SPECIFICATIONS:**

**Pressure rating:**

150 PSIG (10 BAR) NEMA 4X and 6  
(Submersible) IP68

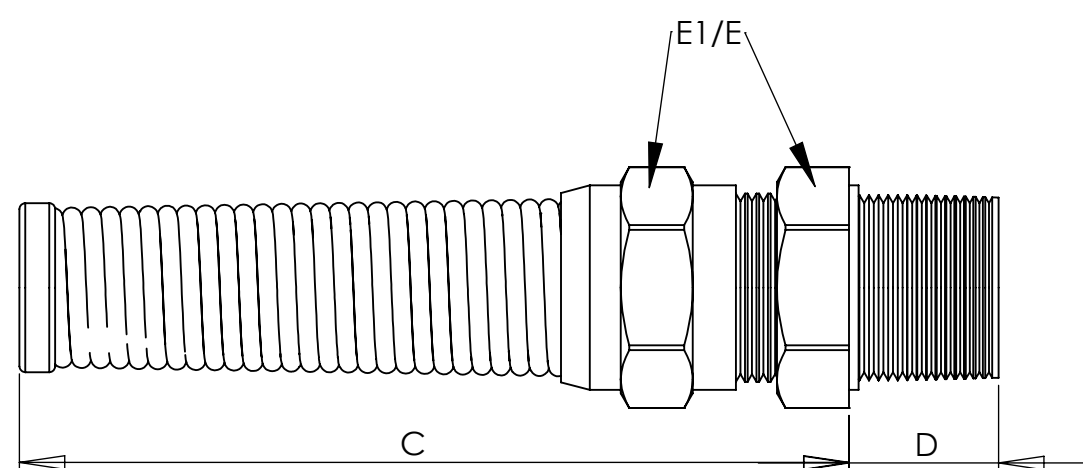
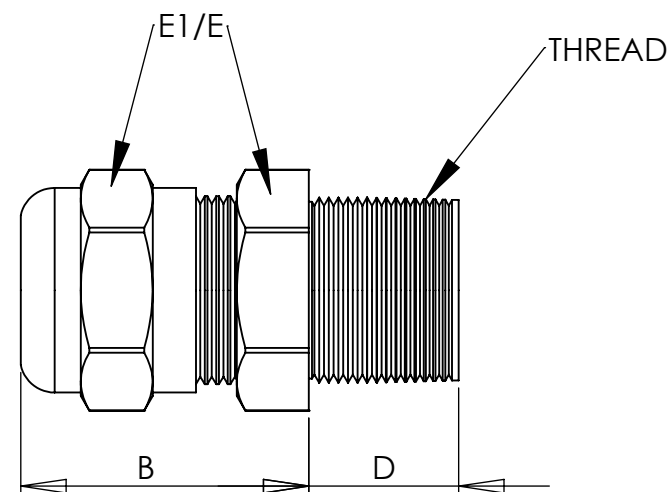
**Materials:**

Body, Dome Nut: Nickel plated brass  
Spring (Flex extension): Stainless Steel  
Splined Bushing: Nylon 6/6  
Form Seal & O-Ring: Buna-N (Viton® optional)

**Operating Temperature:**

-40°F to 212°F (-40°C to 100°C)  
Short term exposure: 248°F (120°C)

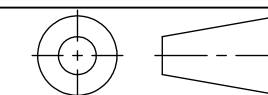
PART NUMBERS		CABLE RANGE inches (mm)	THREAD TYPE AND SIZE For thread specs see page 29	DIMENSIONS INCHES (MM)				
Dome Fittings	Flex Fittings			A Clearance Hole $+0.010^{+0.25\text{mm}}$ 0	B Body Height Dome Fittings	C Body Height Flex Fittings	D Thread Length Fittings	E1/E Wrenching Flats
CD07CA-BR CD07CR-BR	CF07CA-BR CF07CR-BR	.11 - .26 (3 - 6.5) .08 - .20 (2 - 5)	PG 7	.49 (12)	.75(19)	2.16 (55)	.39(10)	.55 (14)
CD09CA-BR CD09CR-BR	CF09CA-BR CF09CR-BR	.16 - .31 (4 - 8) .08 - .24 (2 - 6)	PG 9	.60 (15)	.83(21)	2.60 (66)	.39(10)	.67 (17)
CD11CA-BR CD11CR-BR	CF11CA-BR CF11CR-BR	.20 - .39 (5 - 10) .11 - .27 (3 - 7)	PG 11	.73 (19)	.87(22)	3.03 (77)	.39(10)	.79 (20)
CD13CA-BR CD13CR-BR	CF13CA-BR CF13CR-BR	.24 - .47 (6 - 12) .20 - .35 (5 - 9)	PG 13.5	.80 (20)	.94(24)	3.46 (88)	.39(10)	.87 (22)
CD16CA-BR CD16CR-BR	CF16CA-BR CF16CR-BR	.39 - .55 (10 - 14) .27 - .47 (7 - 12)	PG 16	.88 (22)	.91(23)	3.86 (98)	.39(10)	.94 (24)
CD21CA-BR CD21CR-BR	CF21CA-BR CF21CR-BR	.51 - .71 (13 - 18) .35 - .63 (9 - 16)	PG 21	1.12 (28)	.94(24)	4.37 (111)	.47(12)	1.18 (30)
CD29CA-BR CD29CR-BR		.71 - .98 (18 - 25) .51 - .79 (13 - 20)	PG 29	1.47 (37)	1.14(29)	--	.47(12)	1.57 (40)
CD36CA-BR CD36CR-BR		.87 - 1.26 (22 - 32) .79 - 1.02 (20 - 26)	PG 36	1.85 (47)	1.38(35)	--	.59(15)	1.97 (50)
CD42CA-BR CD42CR-BR		1.26 - 1.50 (32 - 38) .98 - 1.22 (25 - 31)	PG 42	2.13 (54)	1.46(37)	--	.59(15)	2.24 (57)
CD48CA-BR CD48CR-BR		1.46 - 1.73 (37 - 44) 1.14 - 1.38 (29 - 35)	PG 48	2.34 (59)	1.50(38)	--	.59(15)	2.52 (64)



NOTES:

- 1) GENERAL DIMENSIONS DRAWINGS.
- 2) DIMENSIONS [ ] ARE IN INCHES.
- 3) DIMENSIONS NOTED ARE FOR REFERENCE ONLY.

Third angle projection



7374 S. EAGLE STREET  
CENTENNIAL, CO 80112-4221 USA  
TEL: +1-303-699-1135  
TOLL FREE: +1-800-456-9012  
E MAIL: [info@sealconusa.com](mailto:info@sealconusa.com) ,  
WEBSITE: [www.sealconusa.com](http://www.sealconusa.com)

