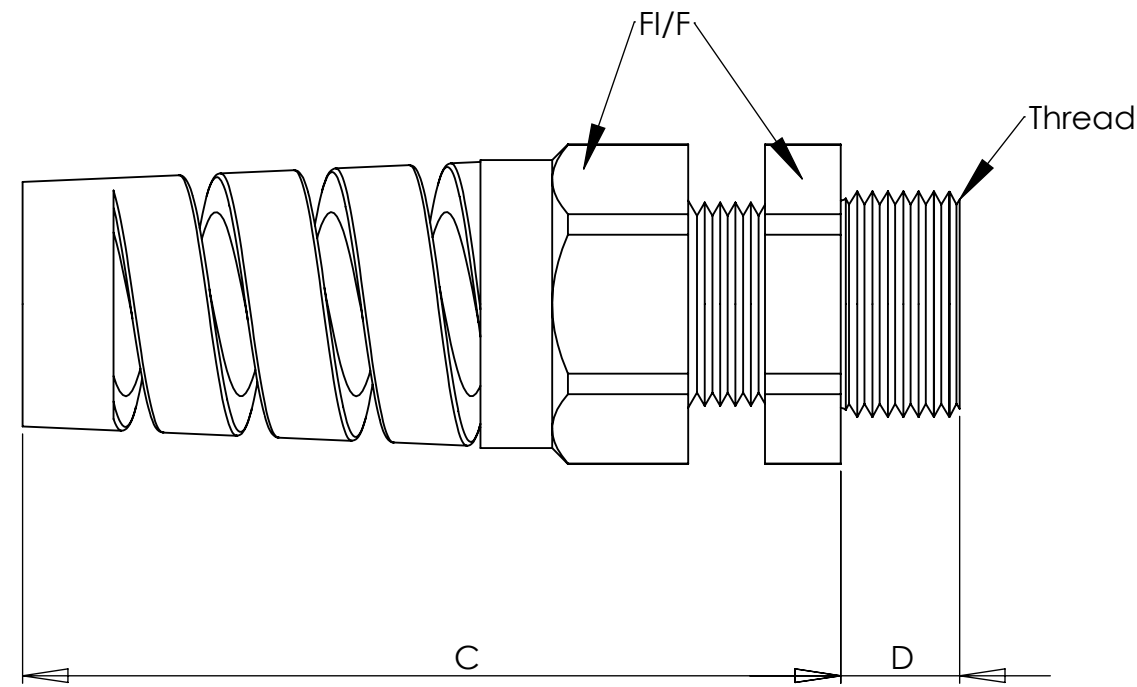
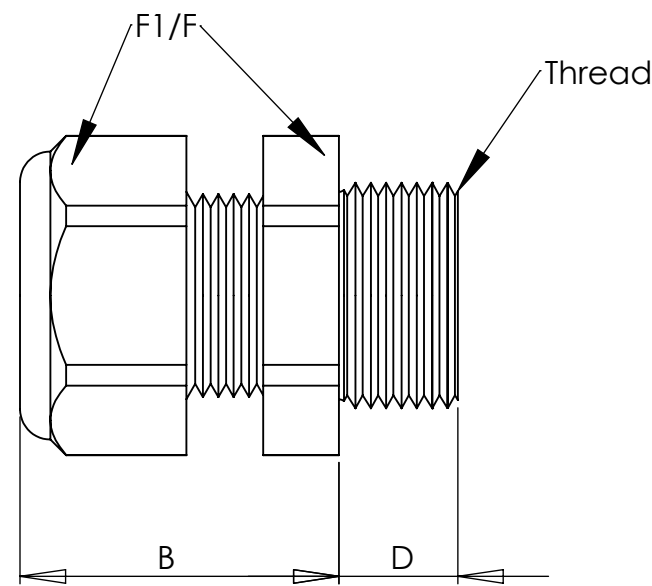


SPECIFICATIONS:

Pressure rating:
150 PSIG (10 BAR) NEMA 4x and 6
(Submersible) IP 68

Materials:
Body & Dome Nut: Nylon 6/6
Form Seal: Buna-N
Optional O-Ring: Buna-N

Operating Temperature:
-40°F to 212°F (-40°C to 100°C)
Short Term: 248°F (120°C)

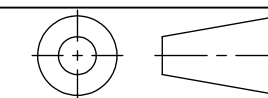


| PART NUMBERS | | | | CABLE RANGE inches (mm) | THREAD TYPE AND SIZE For thread specs see page 29 | DIMENSIONS INCHES (MM) | | | | |
|------------------------|------------------------|------------------------|------------------------|---|--|---|-----------------------------|-----------------------------|-----------------------|----------------------------|
| Dome Fittings | | Flex Fittings | | | | A Clearance Hole $+0.007$ $+0.25$ 0 | B Body Length Dome | C Body Length Flex | D Thread Length | F1/F Wrenching Flats |
| Black | Gray | Black | Gray | | | | | | | |
| CD09BA-BK CD09BR-BK | CD09BA-GY CD09BR-GY | CF09BA-BK CF09BR-BK | CF09BA-GY CF09BR-GY | .11 - .26 (3 - 6.5) .08 - .20 (2 - 5) | PG 9 | .60(15.2) | .83 (21) | 2.13 (54) | .31 (8) | .75 (19) |
| CD11BA-BK CD11BR-BK | CD11BA-GY CD11BR-GY | CF11BA-BK CF11BR-BK | CF11BA-GY CF11BR-GY | .16 - .31 (4 - 8) .08 - .24 (2 - 6) | PG 11 | .73(18.5) | .87 (22) | 2.48 (63) | .31 (8) | .87 (22) |
| CD13BA-BK CD13BR-BK | CD13BA-GY CD13BR-GY | CF13BA-BK CF13BR-BK | CF13BA-GY CD13BR-GY | .20 - .39 (5 - 10) .11 - .27 (3 - 7) | PG 13.5 | .80(20.3) | .98 (25) | 3.07 (78) | .35 (9) | .94 (24) |
| CD16BA-BK CD16BR-BK | CD16BA-GY CD16BR-GY | CF16BA-BK CF16BR-BK | CF16BA-GY CF16BR-GY | .24 - .47 (6 - 12) .20 - .35 (5 - 9) | PG 16 | .88(22.3) | 1.06 (27) | 3.54 (90) | .39 (10) | 1.06 (27) |
| CD21BA-BK CD21BR-BK | CD21BA-GY CD21BR-GY | CF21BA-BK CF21BR-BK | CF21BA-GY CF21BR-GY | .39 - .55 (10 - 14) .27 - .47 (7 - 12) | PG 21 | 1.12(28.4) | 1.10 (28) | 3.94 (100) | .43 (11) | 1.30 (33) |

NOTES:

- 1) GENERAL DIMENSIONS DRAWINGS.
- 2) DIMENSIONS [] ARE IN INCHES.
- 3) DIMENSIONS NOTED ARE FOR REFERENCE ONLY.

Third angle projection



7374 S. EAGLE STREET
CENTENNIAL, CO 80112-4221 USA
TEL: +1-303-699-1135
TOLL FREE: +1-800-456-9012
E MAIL: info@sealconusa.com,
WEBSITE: www.sealconusa.com

