

SPECIFICATIONS:

Pressure rating:

150 PSIG (10 BAR) NEMA 4x and 6
(Submersible) IP 68

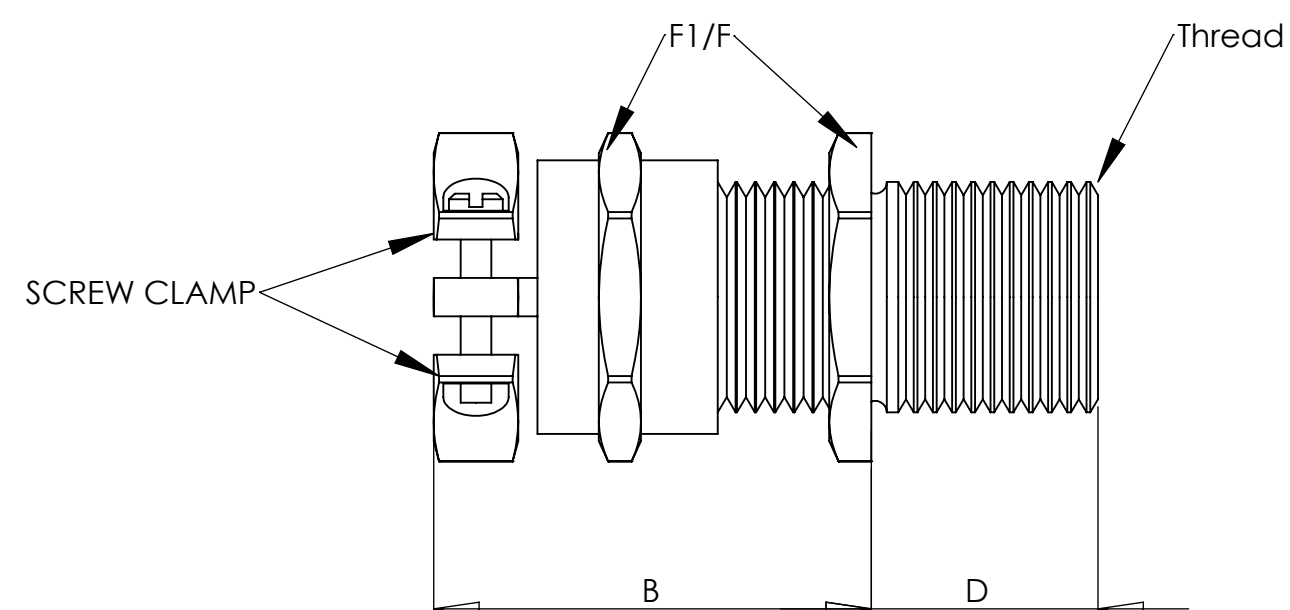
Materials:

Body: Nylon 6/6
Clamping Nut: Anodized Aluminum
Form Seal: Buna-N
Optional O-Ring: Buna-N

Operating Temperature:

-4°F to 158°F (-20°C to 70°C)

PART NUMBERS	CABLE RANGE inches (mm)	THREAD TYPE AND SIZE For thread specs see page 29	DIMENSIONS INCHES (MM)			
			A Clearance Hole +.010" .000	B Body Height Clamp Fittings	D Thread Length Fittings	F1/F Wrenching Flats
CD09AA-CP CD16MA-CP	.16 - .31 (4 - 8) .16 - .31 (4 - 8)	PG 9 M16 x 1,5	.60 (15.2) .63 (16.0)	1.14 (29)	.59 (15)	.75 (19)
CD11AA-CP CD20MA-CP	.24 - .39 (6 - 10) .24 - .47 (6 - 12)	PG 11 M20 x 1,5	.73 (18.5) .79 (20.0)	1.28 (32.5) 1.40 (35.5)	.59 (15)	.87 (22) .94 (24)
CD13AA-CP CD16AA-CP	.24 - .47 (6 - 12) .39 - .55 (10 - 14)	PG 13 PG 16	.80 (20.3) .88 (22.3)	1.40 (35.5) 1.48 (37.5)	.59 (15) .39 (10)	.94 (24) 1.06 (27)
CD25MA-CP CD21AA-CP	.51 - .71 (13 - 18) .51 - .71 (13 - 18)	M25 x 1,5 PG 21	.98 (25.0) 1.12 (28.4)	1.61 (41)	.43 (11)	1.30 (33)
CD32MA-CP CD29AA-CP	.71 - .98 (18 - 25) .71 - .98 (18 - 25)	M32 x 1,5 PG 29	1.26 (32.0) 1.47 (37.3)	1.93 (49)	.43 (11)	1.65 (42)
CD40MA-CP CD36AA-CP	.87 - 1.26 (22 - 32) .87 - 1.26 (22 - 32)	M40 x 1,5 PG 36	1.57 (40.0) 1.85 (47.0)	2.28 (58)	.51 (13)	2.09 (53)
CD50MA-CP CD42AA-CP	1.26 - 1.50 (32 - 38) 1.26 - 1.50 (32 - 38)	M50 x 1,5 PG 42	1.97 (50.0) 2.13 (54.1)	2.42 (61.5)	.51 (13)	2.36 (60)
CD48AA-CP CD63MA-CP	1.46 - 1.73 (37 - 44) 1.46 - 1.73 (37 - 44)	PG 48 M63 x 1,5	2.34 (59.4) 2.48 (63.0)	2.44 (62)	.55 (14)	2.56 (65) 2.56(65)/2.68(68)



NOTES:

- 1) GENERAL DIMENSIONS DRAWINGS.
- 2) DIMENSIONS [] ARE IN INCHES.
- 3) DIMENSIONS NOTED ARE FOR REFERENCE ONLY.

Third angle projection

SEALCON

7374 S. EAGLE STREET
CENTENNIAL, CO 80112-4221 USA
TEL: +1-303-699-1135
TOLL FREE: +1-800-456-9012
E MAIL: info@sealconusa.com,
WEBSITE: www.sealconusa.com