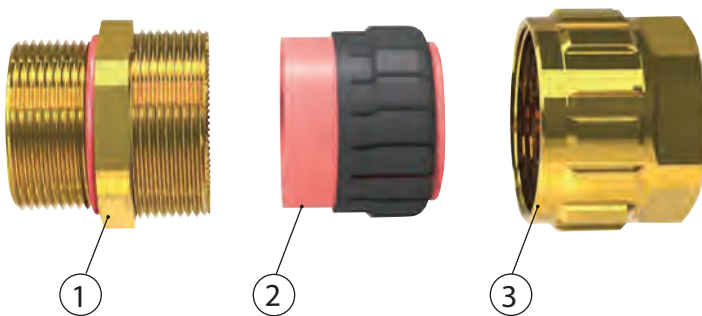


YA (1.608)

Assembly instruction

EXIOS
+A2F



1. Entry Component
2. Sealing
3. Dome Nut

Operating temperature range -76°F to 221°F (-60°C to 105°C)

Protection IP 66, 67, 68 (5 bar)

Certification Details: EXIOS A2F

II 2G Ex d e IIC Gb/II 1D Ex ta IIIC Da

IECEx: DEK 12.0039X

ATEX: DEKRA 12ATEX0139 X

Class I, Div 2, ABCD; Class II, Div 1 & 2, EFG

Class I, Zone 1, AEx de IIC Gb;

Zone 20, AEx ta IIIC, T125°C Da

CSA: 12.2557737X

EN 60079-0/2009 IEC 60079-0/2011

EN 60079-1/2007 IEC 60079-1/2007

EN 60079-7/2007 IEC 60079-7/2006

EN 60079-31/2009 IEC 60079-31/2008

EN 60529

Table 1 – NPT Inch (mm)



Gland Size	G A		L G	\varnothing A ₁	Nm ¹
20-1	NPT 3/8"	.87 (22)	0.63 (16)	0.24-0.47 (6-12)	8
20-1	NPT 1/2"	.87/.94 (22/24)	0.79 (20)	0.24-0.47 (6-12)	8
20-2	NPT 1/2"	.94 (24)	0.79 (20)	0.35-0.63 (9-16)	8
20-3	NPT 3/4"	1.18 (30)	0.81 (20.5)	0.49-0.81 (12.5-20.5)	12
25	NPT 1"	1.42 (36)	0.98 (25)	0.67-1.02 (16.9-26)	18
32	NPT 1 1/4"	1.81 (46)	1.02 (26)	0.87-1.30 (22-33)	30
40	NPT 1 1/2"	2.17 (55)	1.04 (26.5)	1.10-1.61 (28-41)	50
50	NPT 2"	2.56 (65)	1.06 (27)	1.57-2.07 (40-52.6)	60
63	NPT 2 1/2"	3.15 (80)	1.57 (40)	2.01-2.40 (51-61)	65
75	NPT 3"	3.74 (95)	1.63 (41.5)	2.44-3.07 (62-78)	135

Table 2 – M Inch (mm)

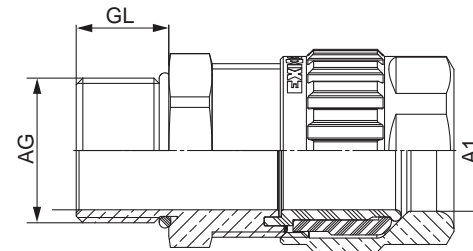
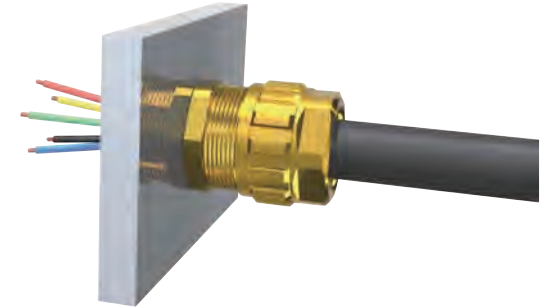
Gland Size	G A		L G	\varnothing A ₁	Nm ¹
20-1	M 16 x 1.5	.87 (22)	0.63 (16)	0.24-0.47 (6-12)	8
20-1	M 20 x 1.5	.87 (22)	0.63 (16)	0.24-0.47 (6-12)	8
20-2	M 20 x 1.5	.94 (24)	0.63 (16)	0.35-0.63 (9-16)	8
20-3	M 25 x 1.5	1.18 (30)	0.63 (16)	0.49-0.81 (12.5-20.5)	12
25	M 32 x 1.5	1.42 (36)	0.63 (16)	0.67-1.02 (16.9-26)	18
32	M 40 x 1.5	1.81 (46)	0.63 (16)	0.87-1.30 (22-33)	30
40	M 50 x 1.5	2.17 (55)	0.63 (16)	1.10-1.61 (28-41)	50
50	M 63 x 1.5	2.56 (65)	0.63 (16)	1.57-2.07 (40-52.6)	60
63	M 75 x 1.5	3.15 (80)	0.63 (16)	2.01-2.57 (51-65.3)	65
75	M 90 x 2	3.74 (95)	0.79 (20)	2.44-3.07 (62-78)	135

¹ Recommended torque only refer to inspection specifications acc. to listed standards. Individual torques may differ due to type and character of the cable.

Assembly

The Cable gland can be installed at the enclosure or etc, after that the cable can be assembled through the gland, the dome nut can now be tightened.

To speed up assembly, it can be tightened by hand to start with. Then tighten up using an open-ended spanner (Nm).



General information:

- Our metric-size cable glands are provided as standard with an O-ring on the connecting thread.
- Before initial operation of the facilities, the assembly is to be checked to see that it conforms to these installation instructions, to the applicable national and international standards, as well as those applicable to the use in question.
- Suitable tools must be used for the assembly; furthermore, the installation may only be carried out by electricians or by trained staff.
- Any modification which differs from the condition as delivered is not permitted.
- The cable glands are only permitted for permanently installed cables (25%).
- In order to fulfill explosion protection type Ex-d, the cable used must be round and compact (cf. IEC 60079-14 Para. 10.2). The cables must also take into consideration in particular the Regulations as per EN 60079-14 Section 9.5.2. Observe the Regulations of EN 60079-14 on direct insertion into the Ex-d area.
- At the specified maintenance intervals it is recommended to check the compression fittings and tighten as necessary.
- In the case of NPT connecting threads, the end-user must ensure that the necessary IP protection is guaranteed; this can be done using a suitable thread sealing agent.
- When installing the cable gland through bore holes, care should be taken that the maximum diameters are not exceeded.
- The cable glands are provided with a sealing ring with an axial sealing height of at least 5mm. With reference to the clearance groove, the end-user should ensure that at least five complete turns of the connector thread are made. In order to guarantee a screw dept of 8mm, the enclosure should have a wall thickness of min. 10mm; if <10mm, then if necessary, use a washer when cable entries are attached to the pressure-resistant enclosure.
- When determining the temperature ranges of the device in the dust Ex-area, the Regulations of EN 60079-0 and EN 60079-31 must be taken into consideration.

Accessories available upon request:

- Lock Nut
- Serrated Washer
- Earth Tag
- PVC Shroud
- IP Washer



January 2014